

VERMA LAB RECRUITS

PURDUE
UNIVERSITY

Engineering microbiomes and using nanotechnology
for improving health

Research Projects (Starting in January 2018):

Develop an in vitro model for the gut microbiome

Use diet to manipulate the microbiome

Use nanotechnology to characterize microbiomes

Lab Location:

Birck Nanotechnology Center

Positions Available:

Postdoctoral Fellow

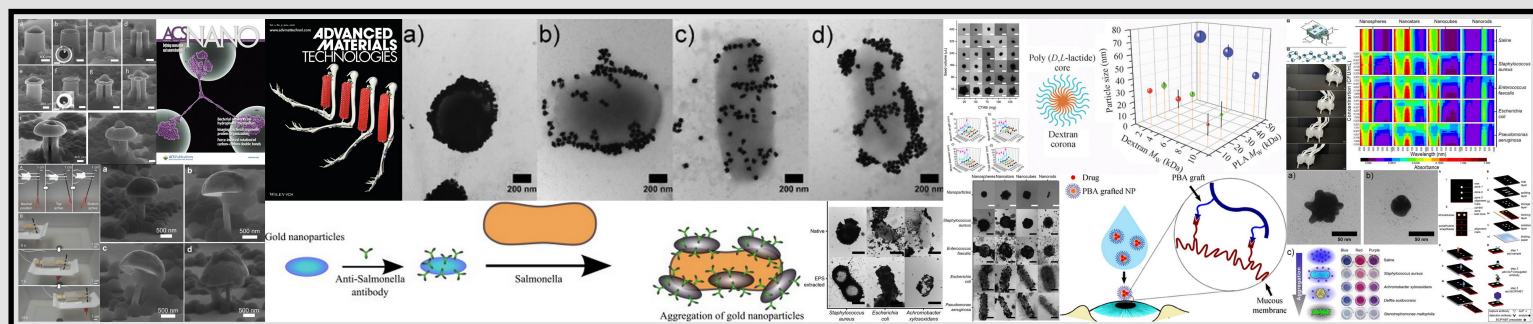
Graduate Student

Undergraduate Student

Lab Technician

Affiliation:

Department of Agricultural and
Biological Engineering



Contact Us

Check out more details at: www.engineering.purdue.edu/vermalab

To join the lab, send your CV and transcript to
Professor Mohit Verma (msverma@purdue.edu)